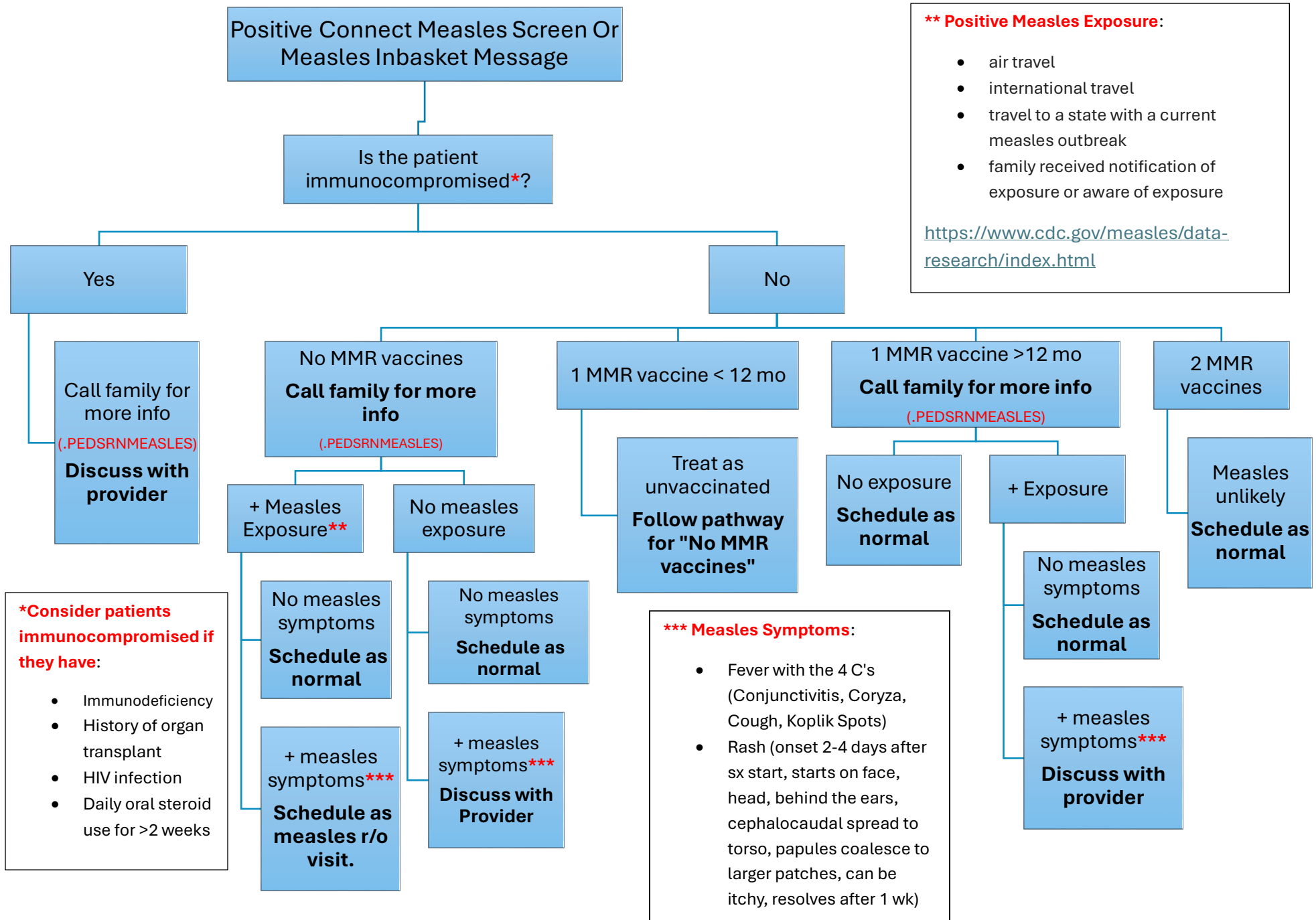


RN Decision Making for Scheduling Measles Rule-out Cases



**** Positive Measles Exposure:**

- air travel
- international travel
- travel to a state with a current measles outbreak
- family received notification of exposure or aware of exposure

<https://www.cdc.gov/measles/data-research/index.html>

***Consider patients immunocompromised if they have:**

- Immunodeficiency
- History of organ transplant
- HIV infection
- Daily oral steroid use for >2 weeks

***** Measles Symptoms:**

- Fever with the 4 C's (Conjunctivitis, Coryza, Cough, Koplik Spots)
- Rash (onset 2-4 days after sx start, starts on face, head, behind the ears, cephalocaudal spread to torso, papules coalesce to larger patches, can be itchy, resolves after 1 wk)

RN Decision Making for Scheduling Measles Rule-out Cases

1. Immunocompromised*:
 - a. **YES:** call family to get details about exposure** and symptoms***. **Please use .PEDSRNMEASLES dot phrase to triage.**
Discuss with provider.
 - b. **NO:** proceed to #2

2. MMR Immunization status:
 - a. No doses of MMR doses:
 - Call family to gather details about exposure** and symptoms***. **Please Use .PEDSRNMEASLES dot phrase to triage.**
 - i. No exposure
 - Positive Measles Symptoms: Discuss with provider. If symptoms ARE concerning for measles, schedule as a measles rule out visit
 - For weekend clinic – refer patient to a St. Luke’s Urgent Care/ED for measles rule out visit.
 - For normal clinic visits - follow clinic measles mitigation plan to schedule a measles rule out visit.
 - No measles symptoms: triage to routine appointment slot.
 - ii. + exposure:
 - No measles symptoms: triage to routine appointment slot.
 - Measles symptoms: Schedule as a measles rule out visit (**see 2a i**).
 - b. 1 MMR dose prior to 1st birthday:
 - Consider same as unimmunized. Call family for details on exposure** and symptoms***. **Follow protocol for 2a.**
 - c. 1 MMR dose after 1st birthday:
 - Call family and gather details on exposure** and symptoms***. **Please use .PEDSRNMEASLES dot phrase to triage.**
 - i. No exposure: triage to routine appointment slot.
 - ii. + exposure, but symptoms NOT consistent with measles:
 - Triage to routine appointment slot.
 - iii. + exposure and symptoms ARE concerning for measles:
 - Discuss with provider. If provider has concern for measles, schedule as a potential measles visit (**see 2a i**).
 - d. 2 doses of MMR after 1st birthday and given >28 days apart (fully immunized):
 - No measles risk. Triage to routine appointment slot.